

Clarinet in E^b

序曲 《徳川頼貞》

Overture to
Raitei Tokugawa : Tokyo
(May 1918)

作曲：エドワード・ウッドダール・ネイラー

Edward Woodall Naylor (1867-1934)

吹奏楽版
for
Wind Orchestra
(November 2018)

編曲：大橋 晃一

arranged by Koichi Ohashi

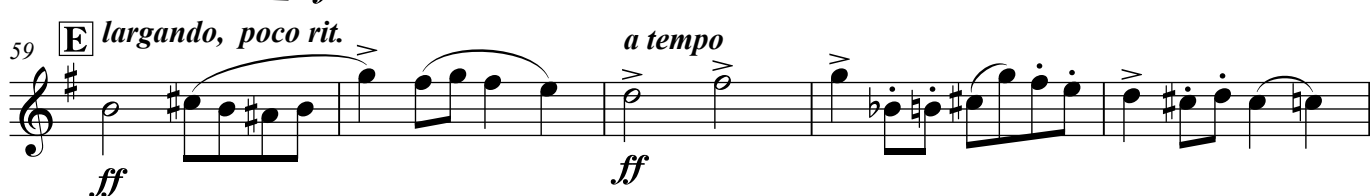
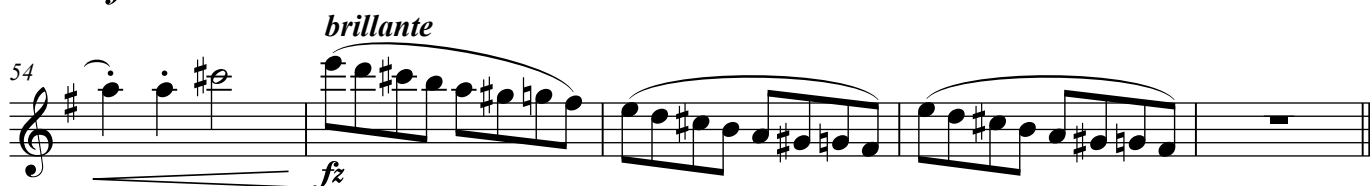
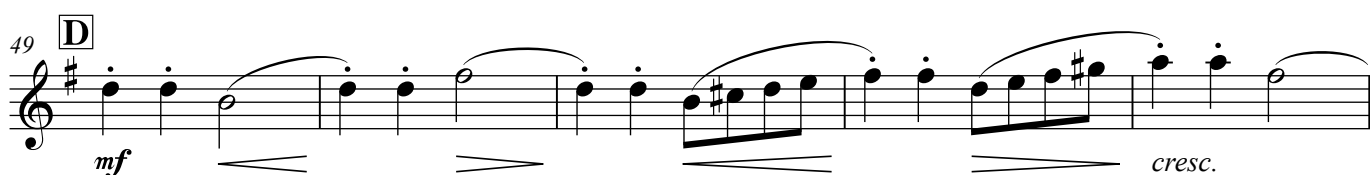
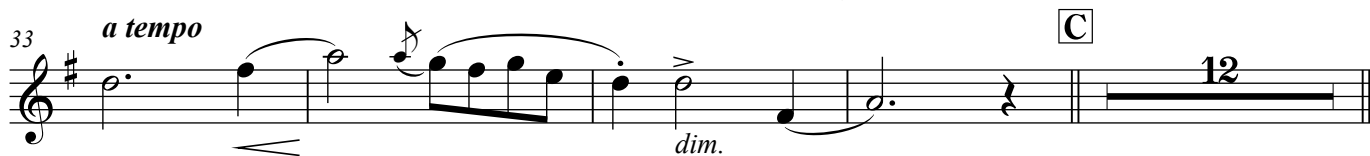
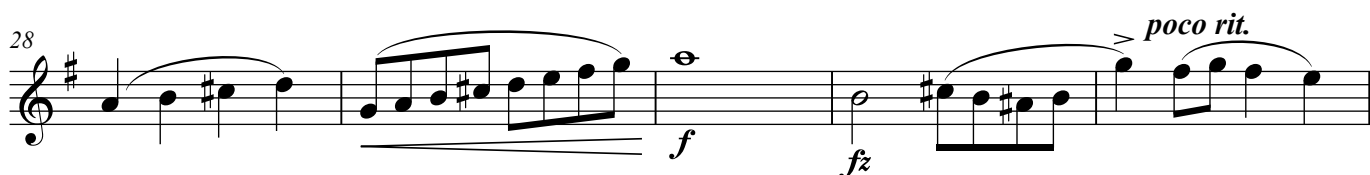
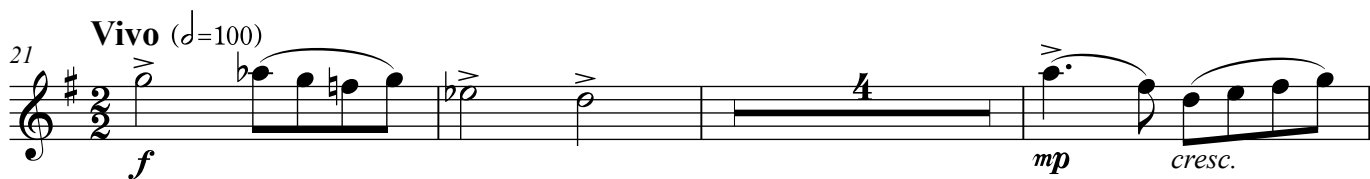
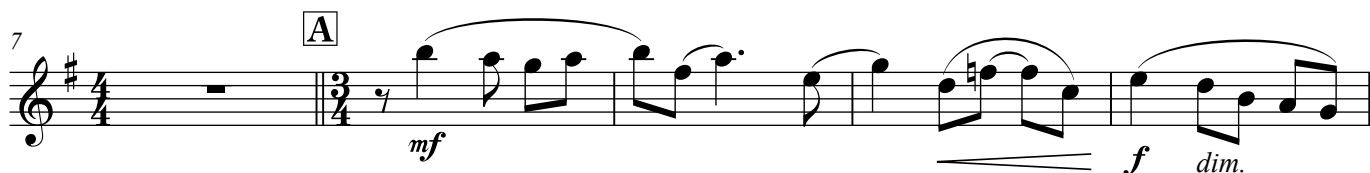
Clarinet in E \flat

序曲 《徳川頼貞》 Overture to Raitei Tokugawa : Tokyo

作曲：エドワード・ウッドャール・ネイラー
編曲：大橋 晃一

Edward Woodall Naylor (1867-1934)
arranged by Koichi Ohashi

Andantino (♩=58)



Overture to Raitei Tokugawa : Tokyo
Clarinet in E^b

64

69 **F**

74 **G**

89 *poco rit.* **H** *a tempo* **I** *ritenuto* **J** *a tempo*

120

125

133 **K** *poco rit.* *a tempo* *rit. molto*

138 *a tempo* **L**

150

154 **M**

159 *brillante*

Measures 64-159 of the Overture to Raitei Tokugawa for Clarinet in E^b. The score is written in treble clef with a key signature of one sharp (F#). It includes various musical notations such as dynamics (mf, f, ff, mp, p, fz, cresc., dim.), articulation (accents), and performance instructions (poco rit., a tempo, ritenuto, rit. molto, brillante). Rehearsal marks F through M are placed at the beginning of specific measures. Measure numbers 64, 69, 74, 89, 120, 125, 133, 138, 150, 154, and 159 are indicated at the start of their respective lines. Some measures contain rests with numbers (2, 4, 8, 11, 12, 14) indicating the duration of the rest.

Overture to Raitei Tokugawa : Tokyo
Clarinet in E^b

164 **N** *largando, poco rit.* *ff* *a tempo* *ff*

168

172 **O** *fz* *fz*

177 **P** *Animato* *f*

181 *poco largando* *a tempo* *ff* *ff*

185 *ff*

191 **Q** *f* *poco largando* *a tempo* *ff*

195 *ff* *ff*

199 **R** *Con fuoco* *fz* *fz* *5*

203 *fz* *fz* *5* *fz* *fz*

208 *ff* **Largo** (♩=90) *ff*